

LASER HEIGHT POLE

1,800,000 MEASUREMENTS PER MINUTE!

DO YOU NEED TO MEASURE OVERHEAD STRUCTURES?

THE RSA LASER HEIGHT POLE WILL ALLOW YOU TO COLLECT THESE MEASUREMENTS AT HIGHWAY SPEEDS FROM THE COMFORT OF YOUR VEHICLE!

April 15, 2015, President of RSA Network Inc., Randy Sorenson stated, "Our work over the past 17 years has culminated with a product that performs and provides accuracy at highway speeds at an affordable price. This product provides instant measurements, and no post processing is necessary, which is unheard of in the world of mobile mapping." Patent Pending

Update – May, 2017 – at the two year anniversary, we now have many units in use by companies and individuals across the US. These companies are now realizing that they can complete Route Surveys in a shorter time frame with more accuracy and with a higher degree of details including GPS coordinates for all measurements that can be utilized during the movement of oversize loads. We are continuing to improve this product, such as a new housing design which was just released. And, we will continue to improve this product over time. More options are now available!



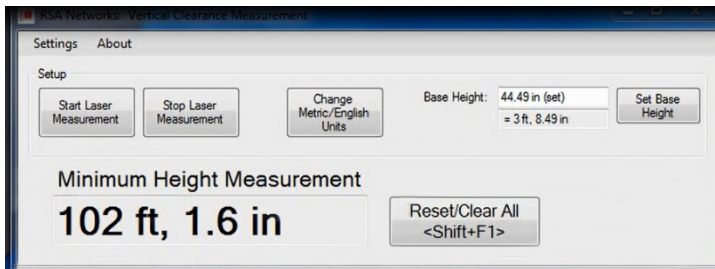
Old Housing Design



New Design with Quick Release

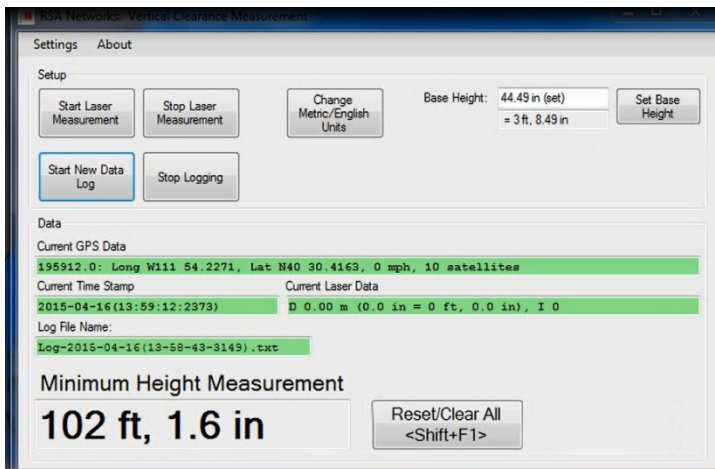
About the Software:

The windows based software has been developed to: collect the measurements from the laser, collect the GPS coordinates and stores this information in a database format. This information is obtained in real time and there is no need to do post processing.



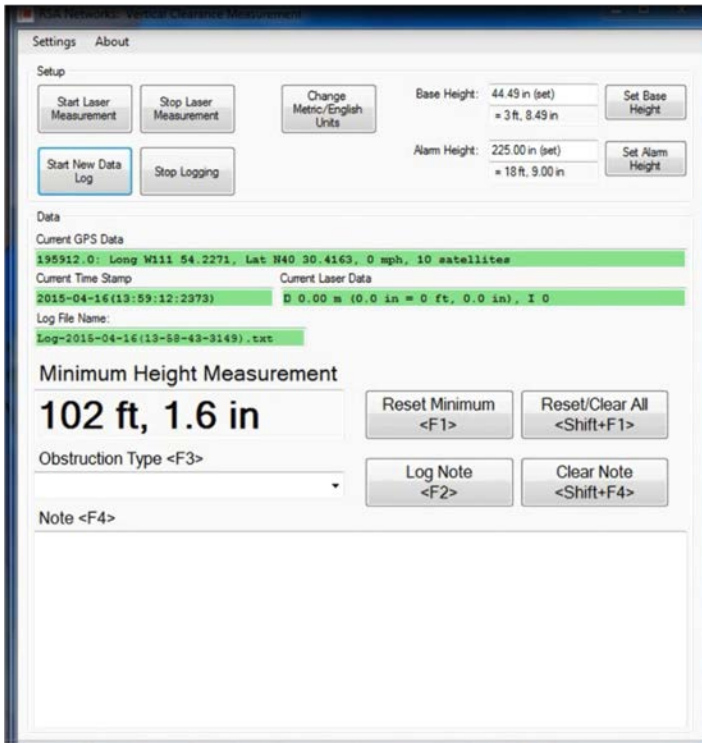
Software - Accuracy:

The laser has the capability to measure objects as small as ¼" in diameter at a highway speed of up to 65 miles per hour and up to 102 feet in height. The accuracy is within +/- 1". The laser is scanning at a rate of 30,000 cycles per second or 1,800,000 per minute.



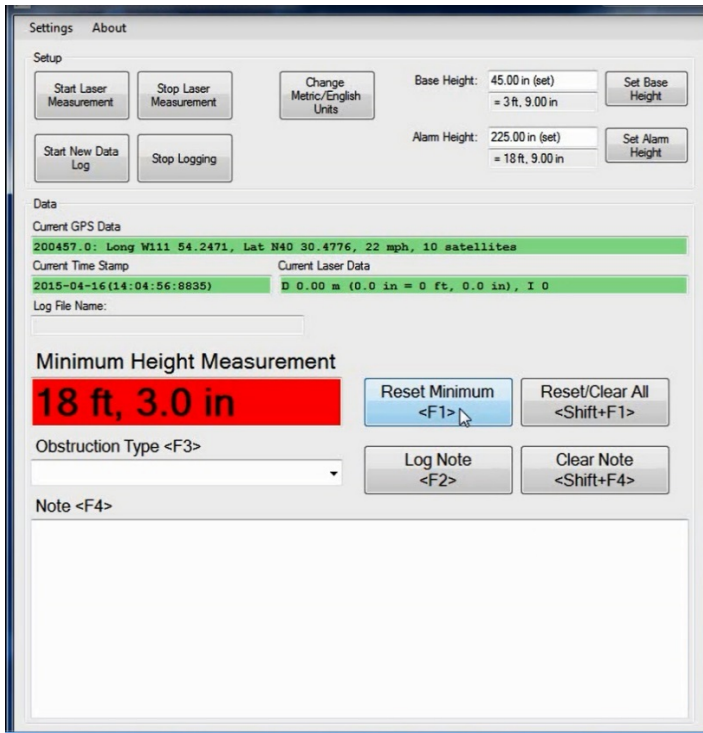
Enhanced Software:

The software automatically collects the measurement of the object and also collects the GPS coordinates (longitude/latitude) for the object and then creates a database log file with this information noted. This is all done automatically. The operator of the computer then resets the computer and laser for the next item to be measured.



Software System:

The Software System includes the following features. When an object is located and measured by the system, the Height Information, GPS Coordinates, Time of Day, Date, Satellite Information is all placed within the Database Log file. In addition, the operator can choose to have a drop down menu that allow the items to be quickly identified and this information is included within the log file. The operator is all provided the option to include special notations and this is also placed in the log file for future use.

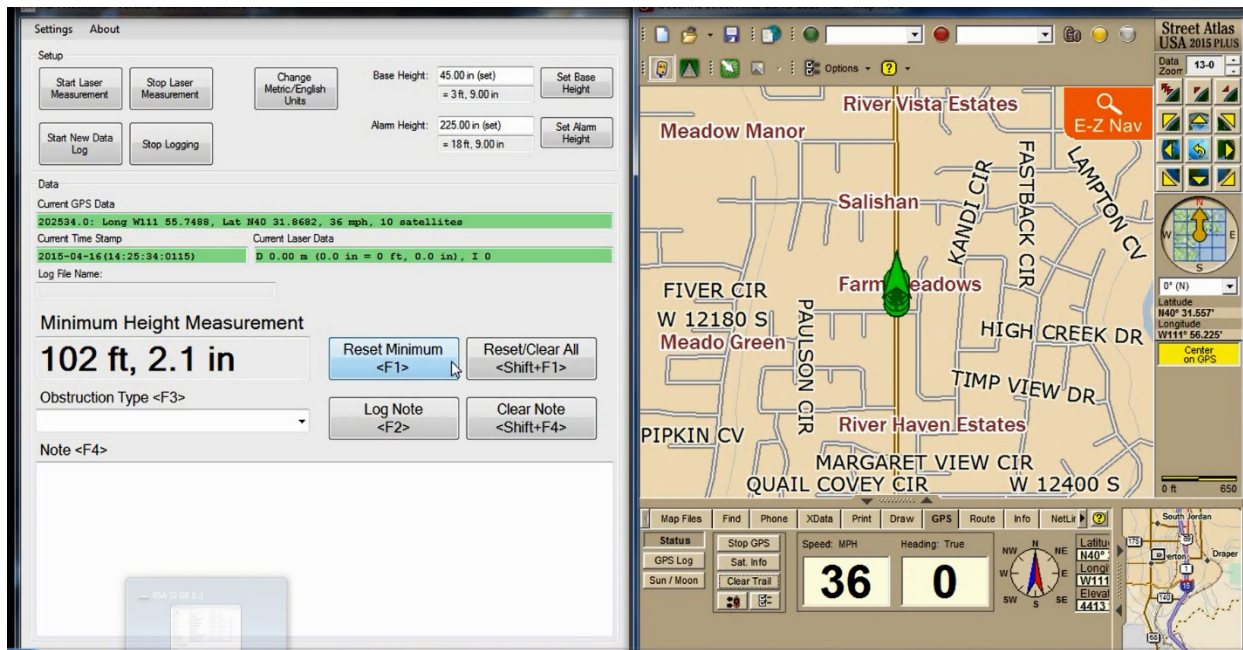


Programmability:

The software allows the user to preset a height that is of concern and when any object is located at or below this height, an alarm is displayed on the screen in Red and an alarm is sounded.

With the Complete Software System, Data from Laser, GPS - Delorme Street Atlas Pro:

These two software programs allow the user to operate two programs at the same, side by side. If a person is performing a Survey for a particular highway and or following a Route, then this route can be followed, data collected and then can be saved into a Database for future use.



Reliable and with a Warranty:

180 Day warranty is provided on all software and hardware that is supplied. The industrial grade laser that is utilized has undergone years of testing in the field. The Class 1 laser utilized is FAA approved and also safe around the human eyes.

Build your system to fit your needs and budget:

Now you have options to customize the system to fit your budget and needs.

Complete System

Our System includes the following:

- This system allows you to measure an overhead structure with extreme accuracy, collect the GPS Coordinates for each overhead object that is located. This information is automatically placed in a database file that can be used at a later date with the mapping software or import into a GIS based mapping system. Alarms can be established allowing the operator to focus at specific items that fall below a height threshold.
- Delorme Street Atlas Plus Software and 1Hz GPS Antenna.
- A ruggedized carrying case for the laser, laptop and cables.
- Windows based computer software that will display on the computer screen, the height of the overhead structure that you passed under.
- Laser, Laser Housing, quick connect to mount the laser housing to the vehicle and a 3 meter cable to connect the laser to the laptop computer (customer supplied). This cable has 1 end that connects to the laser, on the other end are 2 connectors to connect the power (cigarette lighter adaptor and a high speed USB modem that plugs into the laptop computer.
- Step by step operation and installation manual
- Includes 2 hours of technical support.

\$14,548.00

Additional Options:

We can provide pricing for the following options that you may or may not choose to utilize:

- | | |
|--|------------|
| 1. Training - One (1) day of training at our office location. This training would cover the use of the laser software, configuration and calibration of the laser as it is installed in the customer vehicle. Use of the log files and the interaction with the Delorme Street Atlas Software. Plotting Routes within the mapping software. Importing log file data into the mapping software. Creating turn-by-turn routes and printed documents. | \$1,600.00 |
| 2. Customer Location Training - Training noted in Option 1 would be covered. In addition, we would have our instructor travel to your location for this One (1) day training session. In addition, this option covers the travel costs for our instructor to your location for the one day training session. | \$3,400.00 |
| 3. Customer Support Time - block of 3 hours, prepaid. | \$ 585.00 |
| 4. Laptop Computer - Dell Laptop with Windows 7 Professional, Microsoft Office Professional installed. Laser Software installed and configured to laser. Dell Warranty provided. Windows and Office will be registered to customer. | \$1,780.00 |
| 5. 5 Meter Cable for installation within another vehicle. | \$ 586.00 |
| 6. Quick disconnect for laser mounting to another vehicle. | \$ 72.00 |
| 7. Replacement Dongle | \$ 145.00 |
| 8. GPS Antenna - 5Hz | \$ 250.00 |
| 9. 2 Button Controller to aid Driver for collecting data | \$ 185.00 |

For more information about the

Laser Height Pole *Patent Pending*

- give us a call !!

Contact us:

RSA Network Inc.

Sales Department

1654 West Reunion Avenue, STE 10B

South Jordan, Utah 84095

Phone: (801)838-8999 Office - (801)838-8167 Fax

Web: www.rsanetwork.com - or - www.uspilotcar.com